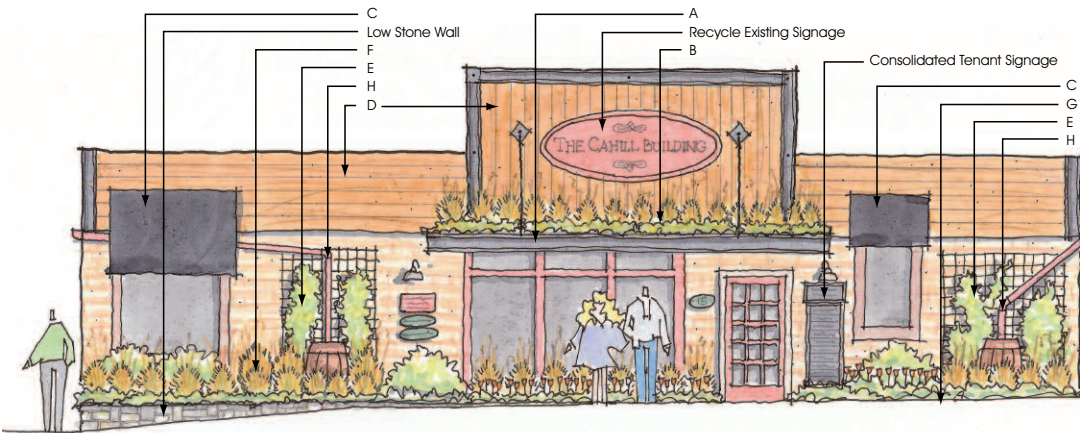


the cahill building towson, maryland

HLA



**HOEHN
LANDSCAPE
ARCHITECTURE, LLC.**



Proposed Elevation – Scale: 1/4" = 1'-0"



Existing Conditions – 15 E. Chesapeake Ave.

form

•

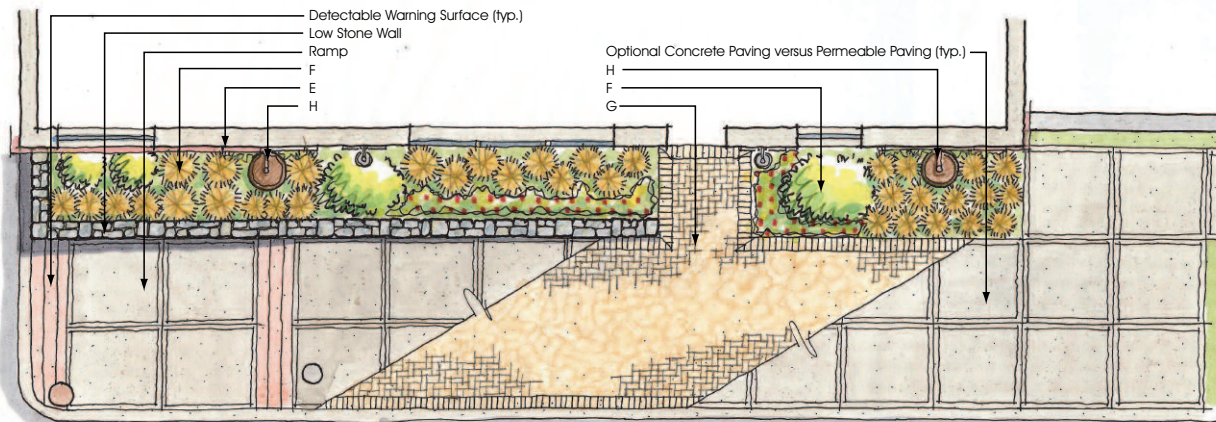
shape

•

function

•

vision



Conceptual Plan – Scale: 1/4" = 1'-0"

Green Building – Renovation Initiatives

- A. Rod Supported Entrance/Bay Window Canopy** – reduces solar gain from the building's southern exposure while providing the opportunity for a publicly visible demonstration green roof project.
- B. Demonstration Green Roof** – a small demonstration Live Roof atop the building entrance canopy promotes Green Building design initiatives at low cost.
- C. Shed Window Awnings** – reduce solar gain from the building's direct southern exposure.
- D. Recycled Composite 'Wood' Siding** – promote the use of recycled building products with the use of low maintenance composite 'wood' siding.
- E. GreenScreen® Building Trellis** – promote a highly visible Green Building image with the use of building mounted trellising. This prefabricated system provides a structurally sound surface for climbing and flowering vines (i.e. climbing hydrangea) to create an attractive green wall that reduces solar gain/harmful greenhouse gases while increasing atmospheric oxygen.
- F. Plant Beds** – decrease existing impermeable surfaces by over 30% by introducing plant beds along the building facade thus allowing groundwater recharge within the plant beds while providing opportunities for oxygen producing plant materials.
- G. Permeable Paving** – further reduce the impermeable surface ratio by introducing permeable pavers allowing infiltration and ground water recharge.
- H. Rain Barrels** – capture rain gutter run-off by diverting the existing downspouts into rain barrels or cisterns for landscape irrigation and groundwater recharge.

Conceptual Elevation and Plan / Proposed Green Building Concepts

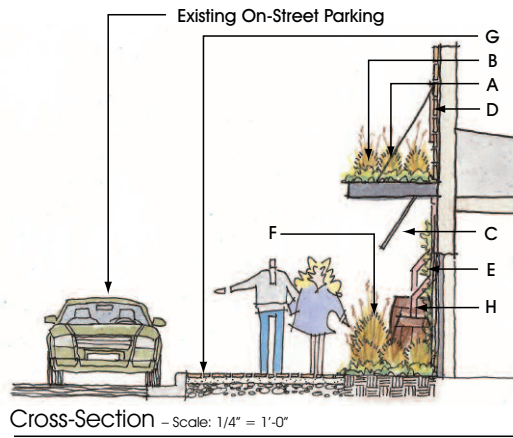
316 Alabama Road
Towson, MD 21204
410.296.3390
fax 410.296.3360
HoehnLA@HoehnLA.com

the cahill building towson, maryland

HLA



HOEHN
LANDSCAPE
ARCHITECTURE, LLC.



A Rod Supported Entrance/Canopy



B Green Roof



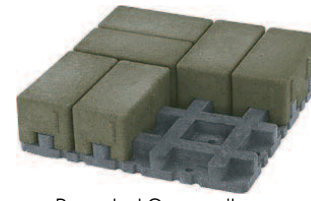
D Recycled Composite Wood Siding



C Shed Window Awnings



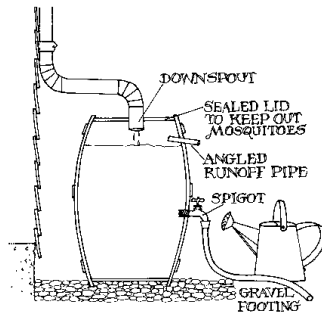
E GreenScreen® Wall Mount Trellis



G Recycled Composite Permeable Pavers

Green Building – Renovation Initiatives

- A. Rod Supported Entrance/Bay Window Canopy** – reduces solar gain from the building's southern exposure while providing the opportunity for a publicly visible demonstration green roof project.
- B. Demonstration Green Roof** – a small demonstration Live Roof atop the building entrance canopy promotes Green Building design initiatives at low cost.
- C. Shed Window Awnings** – reduce solar gain from the building's direct southern exposure.
- D. Recycled Composite 'Wood' Siding** – promote the use of recycled building products with the use of low maintenance composite 'wood' siding.
- E. GreenScreen® Building Trellis** – promote a highly visible Green Building image with the use of building mounted trellising. This prefabricated system provides a structurally sound surface for climbing and flowering vines (ie: climbing hydrangea) to create an attractive green wall that reduces solar gain/harmful greenhouse gases while increasing atmospheric oxygen.
- F. Plant Beds** – decrease existing impermeable surfaces by over 30% by introducing plant beds along the building facade thus allowing groundwater recharge within the plant beds while providing opportunities for oxygen producing plant materials.
- G. Permeable Paving** – further reduce the impermeable surface ratio by introducing permeable pavers allowing infiltration and ground water recharge.
- H. Rain Barrels** – capture rain gutter run-off by diverting the existing downspouts into rain barrels or cisterns for landscape irrigation and groundwater recharge.



H Rainbarrel Concept



H Optional Rainwater Cisterns



H Wood Rain Barrel



Low Stone Wall

form

•

shape

•

function

•

vision

Cross-Section / Proposed Green Building Concepts

316 Alabama Road
Towson, MD 21204
410.296.3390
fax 410.296.3360
HoehnLA@HoehnLA.com