

gait residence

baltimore county, maryland

MAJOR DECIDUOUS/ SHADE TREES

- 1 *Acer Rubrum*
Red Maple
- 2 *Betula Nigra*
River Birch
- 3 *Cercidiphyllum Japonicum*
Katsura Tree
- 4 *Cladrastis Lutea*
American Yellowwood
- 5 *Metasequoia Glyptostroboides*
Dawn Redwood
- 6 *Quercus Bicolor*
Swamp White Oak

UNDERSTORY/ FLOWERING TREES

- 7 *Acer Palmatum 'Bloodgood'*
Japanese Maple
- 8 *Amelanchier Laevis*
Allegheny Serviceberry
- 9 *Cercis Canadensis*
Eastern Redbud
- 10 *Chionanthus Virginicus*
Fringe Tree
- 11 *Cornus Kousa*
Kousa Dogwood
- 12 *Halesia Tetraptera*
Carolina Silverbell
- 13 *Magnolia Virginiana*
Sweetbay Magnolia
- 14 *Prunus Yedoensis*
Yoshino Cherry

EVERGREEN TREES

- 15 *Cupressocyparis Leylandii*
Leyland Cypress
- 16 *Ilex X 'Nellie R. Stevens'*
Nellie Stevens Holly
- 17 *Picea Abies*
Norway Spruce
- 18 *Pinus Strobus*
Eastern White Pine

SHRUBS

- 19 *Buddleia Davidii 'Pink Delite'*
Butterfly Bush
- 20 *Clethra Alnifolia 'Ruby Spice'*
Summersweet Clethra
- 21 *Cornus Alba 'Elegantissima'*
Variegated Dogwood
- 22 *Cornus Sericea*
Redtwig Dogwood
- 23 *Euonymus Alatus 'Compactus'*
Dwarf Winged Euonymus/
Burning Bush
- 24 *Euonymus Kiautschovicus 'Manhattan'*
Evergreen Euonymus
- 25 *Forsytia X Intermedia 'Lynwood'*
Lynwood Gold Forsythia
- 26 *Fothergilla Gardenii 'Mt. Airy'*
Dwarf Fothergilla
- 27 *Hydrangea Macrophylla*
Big Leaved Hydrangea
- 28 *Ilex Glabra*
Inkberry
- 29 *Itea Virginica 'Henry's Garnet'*
Virginia Sweetspire
- 30 *Myrica Pensylvanica*
Northern Bayberry
- 31 *Nandina Domestica*
Heavenly Bamboo

32 *Nandina Domestica 'Nana'*

- Dwarf Heavenly Bamboo
- 33 *Prunus laurocerasus 'Otto Luyken'*
Dwarf/Otto Cherry Laurel
 - 34 *Prunus Laurocerasus 'Schipkaensis'*
Skip Cherry Laurel
 - 35 *Rhododendron 'Delaware Valley White'*
Delaware Valley Azalea
 - 36 *Rhododendron 'PJM'*
PJM Rhododendron

37 *Rhododendron 'Salmon Beauty'*

- Salmon Beauty Azalea
- 38 *Rhododendron Viscosum*
Swamp Azalea
 - 39 *Spiraea X Bumalda 'Anthony Waterer'*
Bulmad Spiraea
 - 40 *Taxus Baccata Repandens*
Dwarf Spreading Yew
 - 41 *Viburnum X Burkwoodi*
Burkwood Viburnum
 - 42 *Viburnum Dentatum*
Arrowwood Viburnum
 - 43 *Viburnum Opulus 'Compactum'*
American Cranberrybush Viburnum
 - 44 *Viburnum Plicatum Tomentosum 'Mariesii'*
Double Viburnum

HERBACEOUS PERENNIALS

- 45 *Astilbe 'Taquetii Superba'*
False Spirea
- 46 *Hermerocallis 'Stella Doro'*
Daylily
- 47 *Hosta Fortunei 'Agreo-Margenata'*
Fortunes Plantainlily
- 48 *Hosta 'Krossa Regal'*
Regal Plantainlily
- 49 *Hosta Sieboldiana 'Francis Williams'*
Siebold Plantainlily
- 50 *Osmunda Regalis*
Royal Fern
- 51 *Peonia Lactiflora 'Shirley Temple'*
Garden Peony

ORNAMENTAL GRASSES

- 52 *Miscanthus Sinensis 'Silberfeder'*
Japanese Silver Grass
- 53 *Pennisetum Alpecuroides*
Fountaingrass
- 54 *Pennisetum Alpecuroides 'Hameln'*
Dwarf Fountain Grass
- 55 *Pennisetum Alpecuroides 'Little Bunny'*
Little Bunny Grass

GROUND COVERS

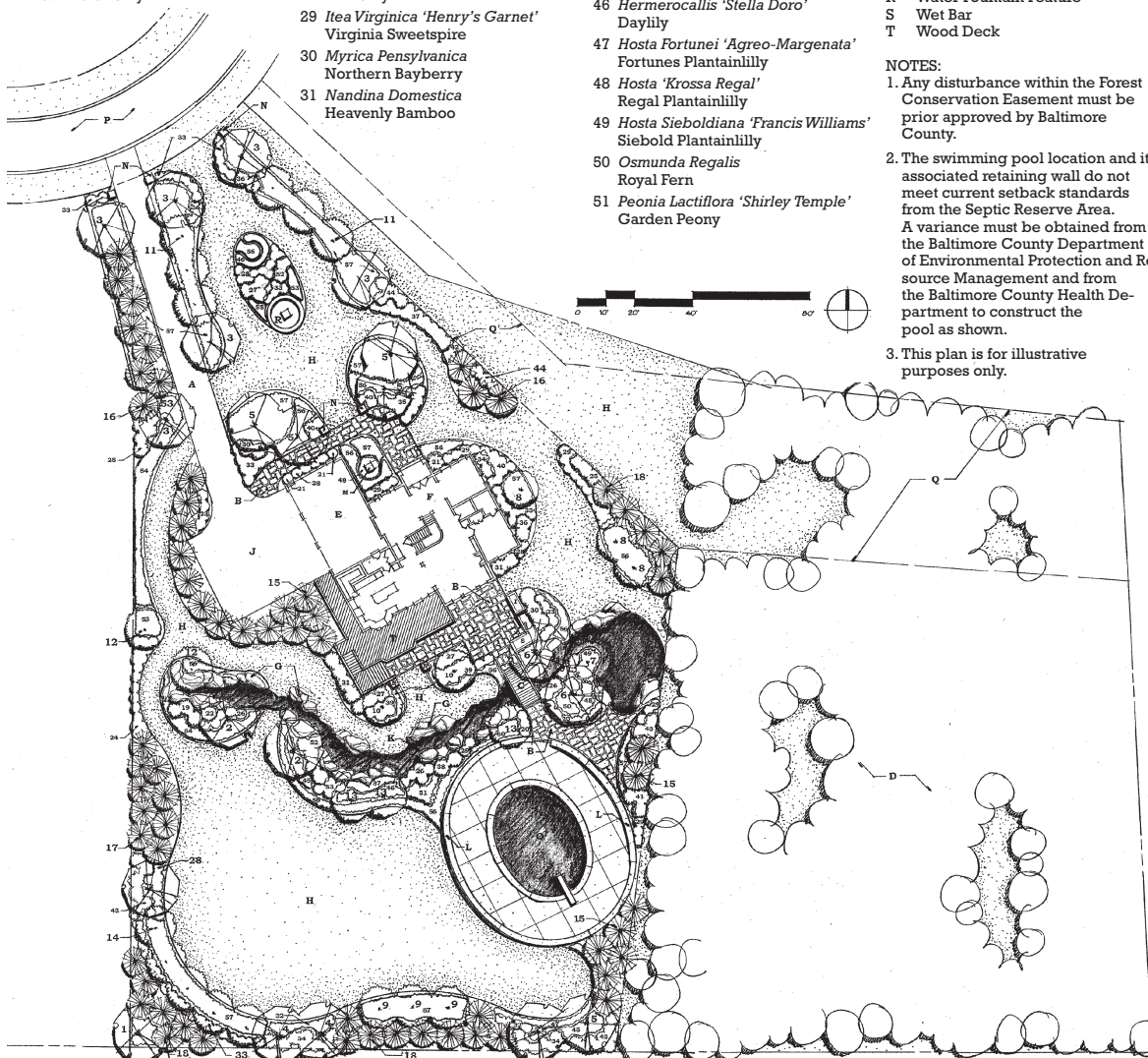
- 56 *Liriope Muscari*
Lillyturf
- 57 *Pachysandra Terminalis*
Spurge/Japanese Pachysandra

MISCELLANEOUS

- A Driveway
- B Fieldstone Paving
- C Foot Bridge
- D Forest Conservation Area
- E Garage
- F House
- G Landscape Boulders
- H Lawn
- I Outdoor Fireplace/Grill
- J Parking Pad
- K Recirculating Amenity Stream
- L Retaining Wall/Pool Fence
- M Sculpture Feature
- N Stone Accent Pier
- O Swimming Pool
- P Traffic Circle
- Q Utility Easement Area
- R Water Fountain Feature
- S Wet Bar
- T Wood Deck

NOTES:

1. Any disturbance within the Forest Conservation Easement must be prior approved by Baltimore County.
2. The swimming pool location and its associated retaining wall do not meet current setback standards from the Septic Reserve Area. A variance must be obtained from the Baltimore County Department of Environmental Protection and Resource Management and from the Baltimore County Health Department to construct the pool as shown.
3. This plan is for illustrative purposes only.



HLA

HOEHN
LANDSCAPE
ARCHITECTURE, LLC.

form

shape

function

vision

316 Alabama Road
Towson, MD 21204
410.296.3390
fax 410.296.3360
HoehnLA@HoehnLA.com