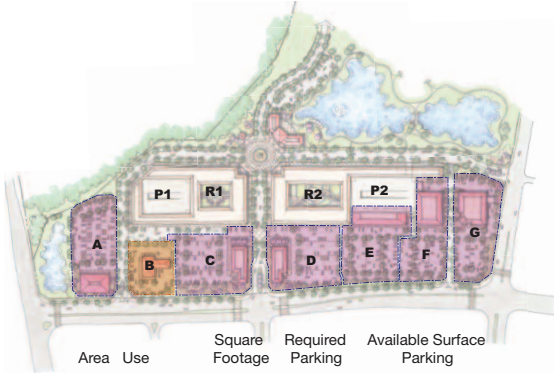
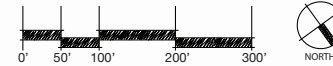
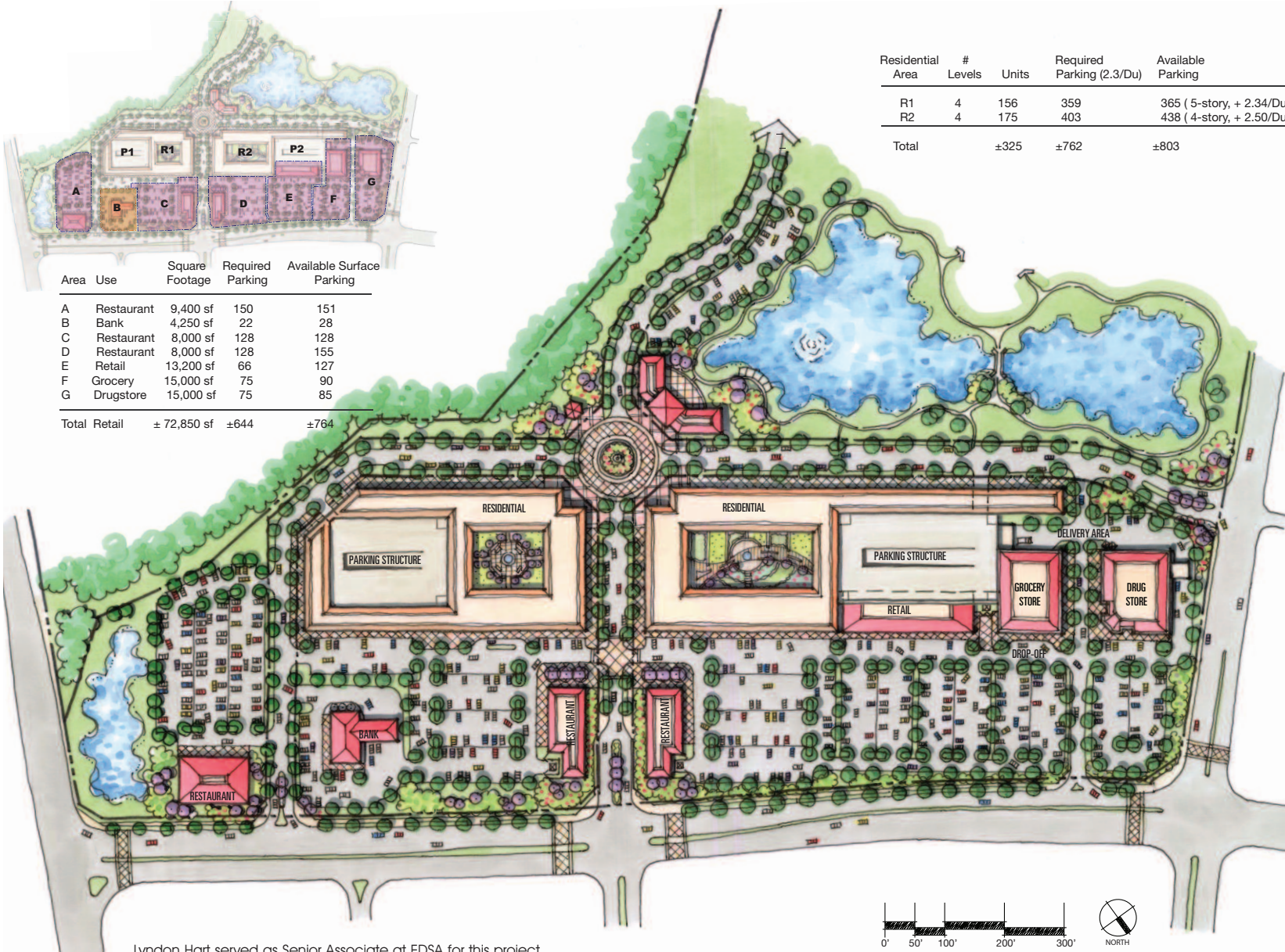


# mixed-use/lifestyle center confidential location



Area	Use	Square Footage	Required Parking	Available Surface Parking
A	Restaurant	9,400 sf	150	151
B	Bank	4,250 sf	22	28
C	Restaurant	8,000 sf	128	128
D	Restaurant	8,000 sf	128	155
E	Retail	13,200 sf	66	127
F	Grocery	15,000 sf	75	90
G	Drugstore	15,000 sf	75	85
Total Retail		± 72,850 sf	±644	±764

Residential Area	# Levels	Units	Required Parking (2.3/Du)	Available Parking
R1	4	156	359	365 (5-story, + 2.34/Du)
R2	4	175	403	438 (4-story, + 2.50/Du)
Total		±325	±762	±803



Lyndon Hart served as Senior Associate at EDSA for this project

**HLA**

**HOEHN**  
LANDSCAPE  
ARCHITECTURE, LLC.

form

•

shape

•

function

•

vision

316 Alabama Road  
Towson, MD 21204  
410.296.3390  
fax 410.296.3360  
HoehnLA@HoehnLA.com