

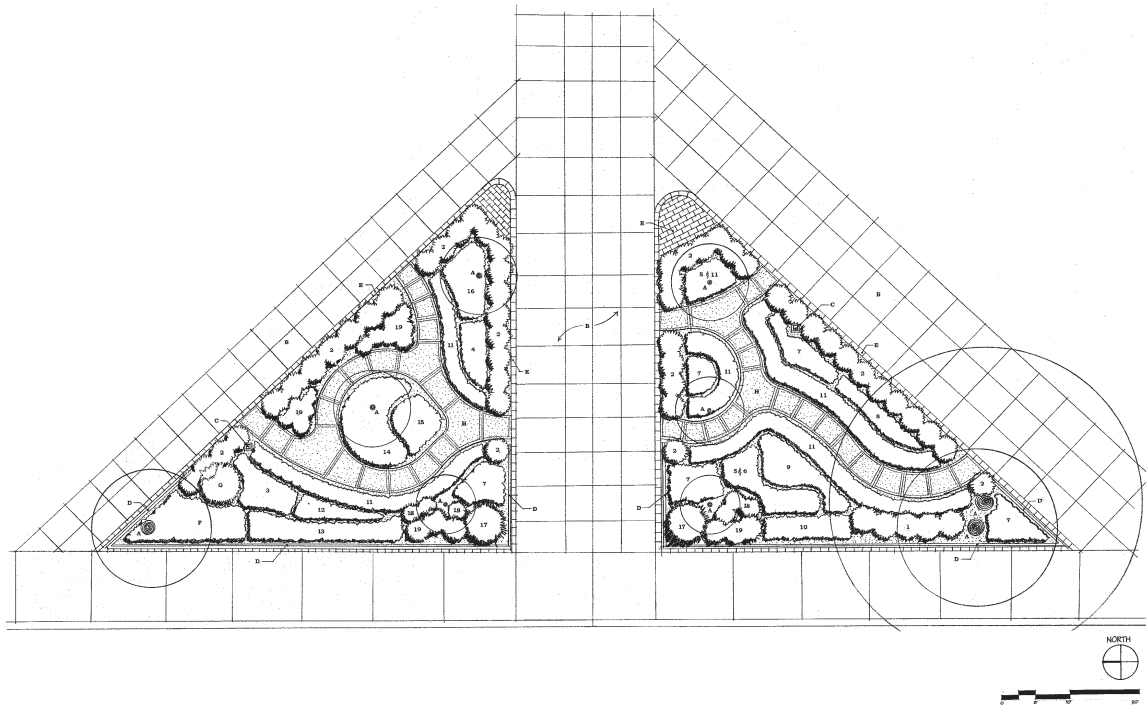
# the helen satosky memorial garden

at roland park school

**HLA**



**HOEHN**  
LANDSCAPE  
ARCHITECTURE, LLC.



## SHRUBS

- 1 *Itea Virginia* 'Little Henry'  
Dwarf Virginia Sweetspire  
(blooms July-July)
- 2 *Prunus Laurocerasus* 'Otto Luytken'  
Dwarf Cherry Laurel  
(blooms April-May)

## HERBACIOUS PERENNIALS

- 3 *Chrysanthemum Nipponicum*  
Nippon Daisy  
(blooms September-October)
- 4 *Dianthus Species* 'Pixie'  
Cheddar Pinks  
(blooms May-September)
- 5 *Digitalis Mertonensis*  
Foxglove  
(blooms June-July)
- 6 *Geranium Maculatum* 'Espresso'  
Cranesbill  
(blooms May-June)
- 7 *Hemocallis Species*  
Daylily  
(blooms June-July)
- 8 *Heuchera Sanguinea* 'Raspberry Regal'  
Coral Bells  
(blooms May-June)
- 9 *Hypericum Calycinum*  
St. John's Wart  
(blooms June-September)
- 10 *Iris Siberica* 'Butter and Sugar'  
Siberian Iris  
(blooms May-June)
- 11 *Liriope Muscari*  
Lilyturf  
(blooms August-September)
- 12 *Paeonia Lactiflora* 'Felix Crouse'  
Garden Peony  
(blooms May-June)
- 13 *Perovskia Atriplicifolia*  
Russian Sage  
(blooms July-September)
- 14 *Rudbeckia Fulgida* 'Goldstrum'  
Black-Eyed Susan  
(blooms July-September)
- 15 *Sedum Spectabile*  
Showy Stonecrop  
(blooms August-October)
- 16 *Veronica Alpina* 'Alba'  
Speedwell Veronica  
(blooms June-September)

## ORNAMENTAL GRASSES

- 17 *Miscanthus Purpurascens*  
Red-Leaved Miscanthus  
(blooms September-October)
- 18 *Pennisetum Alopecuroides* 'Hameln'  
Dwarf Fountain Grass  
(blooms August-October)
- 19 *Pennisetum Alopecuroides* 'Moudry'  
Black Flowering Fountain Grass  
(blooms September-October)

## BULBS

All border beds are to be planted with 'Paper White' Daffodils at 1' O.C. The central island, located in the north triangle is to be planted with 12" to 14" high Red Tulips at 1' O.C. The bloom times of each should be coordinated for simultaneous bloom.

## MISCELLANEOUS

- A Existing Tree
- B Existing Concrete Walkway
- C Existing Pedestrian Pole Light
- D Existing Ornamental Iron Fence ('Fish Fence')
- E Existing Granite Cobble Edging
- F Existing Daylilies to Remain
- G Existing Shrub to Remain
- H Proposed Garden Pathway

form

•

shape

•

function

•

vision

316 Alabama Road  
Towson, MD 21204  
410.296.3390  
fax 410.296.3360  
HoehnLA@HoehnLA.com